

**PUT DOWN THE
MARKERS**

AND NO ONE GETS HURT

**DON'T WRITE
ON THIS WALL UNTIL**

**FILL IN THE DATE + TIME 24 HOURS
FROM COMPLETED INSTALLATION.**

**HANG IT ON THE WALL WITH A LOW ADHESIVE TAPE
SUCH AS PAINTER'S TAPE.***

*High adhesive tapes can potentially damage
the surface of the wallcovering.

WALLCOVERING INSTALLATION INSTRUCTIONS: IDEAPAIN MAG & ALL-IN-1



READ FIRST - IMPORTANT TIPS

- **INSTALLATION ORIENTATION:** Can be either vertical or horizontal. For optimal performance, horizontal is recommended
- Can be adhered to any properly prepped standard construction wall
- Two people are required to install. Do not crease or fold the material. Wear gloves when installing.
- Apply wallcovering using one of our recommended vinyl on vinyl wallcovering adhesives. Standard wallcovering adhesives will not work with the magnetic backing of this product.

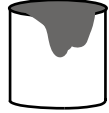
SUPPLIES NOT INCLUDED



PRIMER



WATER



ADHESIVE



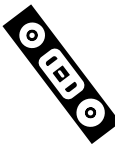
PAINT ROLLER



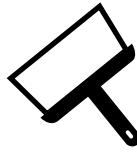
BLADE



PENCIL



LEVEL



SPATULA

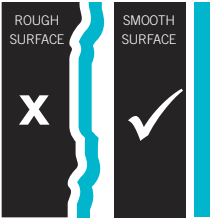


SPATULA

For additional information visit www.ideapaint.com/help.

PREP

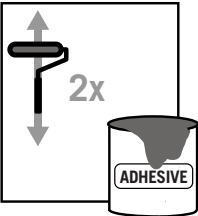
01



SURFACE PREP/PRIME

- Cover floor with plastic sheeting or other suitable protection material.
- Remove all previous wallcoverings & loose paint. Check the surface and fill in any holes or cracks with a standard filler.
- Wash wall to remove all grease and dirt. If the surface is glossy, sand the wall and then wash it to remove dust. Walls should be dry, clean, smooth, and free of all mildew, grease, and stains.
- Surface imperfections will show through the wallcovering. Use sandpaper to remove rough or uneven surfaces. We recommend walls be prepared to a Level 4 or 5 finish before applying the wallcovering.
- Absorbent surfaces should be treated with a quality, white, stain-blocking primer, such as Roman® Wallpaper Primer. The primer must be fully dry before applying any adhesive to your wall.
- With a pencil, mark a straight, level and horizontal line across the wall, 4 feet (1.22 m) off the floor. This will guide the top edge of the first section of wallcovering.

02



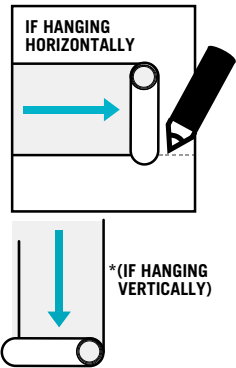
ADHESIVE APPLICATION

- Measure the wallcovering to the desired length and cut with a sharp blade or scissors.
- One of the following recommended vinyl over vinyl adhesives must be used to adhere your Wink wallcovering to the wall: Dynamite 760 Vinyl Over Vinyl adhesive or Roman® PRO-555 Extreme Tack (Standard wallcovering adhesives are not suitable with the magnetic backing of this product.) If required, add 5% water to the adhesive and stir before using.
- Apply two coats of the vinyl over vinyl adhesive to the wall with a roller and brush for the edges, waiting 30 minutes between coats.

DO NOT over apply the adhesive.

INSTALL

03



INSTALLATION OF FIRST LENGTH OF WALLCOVERING

- 1 Carefully roll the wallcovering strip with the backing side on the outside, being careful not to crease the material. Starting in the left corner, roll the wallcovering out along the wall from left to right.
- 2 Starting in the left corner, install the bottom section first. Roll the wallcovering out along the wall so that the black side of the material is attached to the wall. Place the top edge of the wallcovering on the pencil guide line at 4 feet off the floor.
- 3 Carefully roll out the wallcovering along the wall pushing out any air and excess adhesive from behind the material as you proceed.
- 4 Using a wallpaper spatula, press the entire surface of the wallcovering to the wall, pushing out all the excess adhesive from behind the material.
- 5 Use a consistent and strong pressure to ensure that all air bubbles and excess adhesive have been pushed out to the edges. Press the entire surface firmly to the wall.
- 6 Check that your first strip of wallcovering is completely free of air bubbles before continuing.

NOTE: If you choose to hang the wallcovering vertically, follow the same procedure as above, starting in the top left corner of the wall working from left to right.

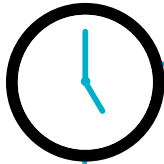
04



ADDITIONAL LENGTHS OF WALLCOVERING/SEAMING

- 1 For jointing the material, the preferred method is butting the material together. The material is supplied with clean straight edges that meet evenly.
- 2 It is important to hang the lower section first, so the section applied above will naturally sit on the lower section.
- 3 The material will meet and can be worked together with a wallpaper spatula. Work the material by applying upwards and downwards pressure to each section along the joints, bringing them together.
- 4 If an area of the joint requires additional attention, add extra adhesive and continue to work together.
- 5 If the joint/seam is not flat, gently lift the edge of one section of the wallcovering off the wall and guide the material together and work again with spatula. You may need to add a small amount of extra adhesive.
- 6 Check the entire surface of the wallcovering for any excess adhesive or air pockets and push them out to an edge with a spatula.
- 7 Make sure to push out the entire sections of wallcovering, making sure that each section is free of air bubbles before continuing. Repeat this process for the entire installation of the wallcovering.
- 8 Thirty minutes after the last strip is installed, visually inspect the entire wallcovering surface for air bubbles. Use a spatula to push them firmly out to the edge.
- 9 Wipe the entire surface clean with a damp cloth to remove any excess adhesive residue, inspecting the wallcovering for any air bubbles as you work accross the surface.

NOTE: If you choose to joint by double-cutting, overlap edges by 1 inch, then mark a straight line along the middle of the overlapping section with a pencil. Using a new blade, cut along the pencil line through both layers and remove the excess material from behind the cut. The two sections will now meet and can be worked together, as above.



WAIT 48 HOURS

**FILL IN THE DATE + TIME
(ON REVERSE OF THIS PAGE)
48 HOURS FROM COMPLETED
INSTALLATION AND HANG IT ON THE
WALL WITH A LOW ADHESIVE TAPE
SUCH AS PAINTER'S TAPE.***

*High adhesive tapes can potentially damage the surface of the wallcovering.

USE & CARE

05

USE & CARE: GUIDANCE

Markers:
Use premium dry erase markers, such as IdeaPaint bullet and chisel tip Dry Erase Markers. If these are not available use other premium dry erase markers, such as Expo® low odor markers, BIC, Quartet, etc. If using dry erase markers other than these, test a small area before using to ensure that they don't stain.



Cleaner:
We recommend using IdeaPaint Cleaner. In general, we recommend using mild dry erase cleaning products or a mixture of gentle dish soap and water with IdeaPaint or other microfiber cleaning cloths. DO NOT use cleaning products that are not intended for dry erase surfaces. DO NOT use cleaning products that contain harsh solvents or alcohol.



Care of Maintenance:
IdeaPaint surfaces should be erased regularly/daily with IdeaPaint Erasers.

Avoid build-up over time and extend the life of your IdeaPaint surfaces by regularly using IdeaPaint Cleaner Spray and Microfiber Cleaning Cloths. Walls should be cleaned at least weekly.

If your walls are heavily used or your walls have stuck on markers that IdeaPaint's standard Cleaner cannot remove, then use IdeaPaint's Marker Blaster to bring life back to your walls.